

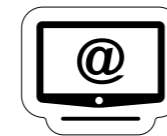
Kia maintains uniform prices and terms nationwide to earn customers' trust.

Differences between information in the brochures and products sold may occur due to discrepancies with the printing date of brochures. Specifications may change due to suppliers' circumstances. Photographs may depict optional features. Please refer to the latest price list and contact a sales representative to make a purchase.

- Colors depicted in photographs may differ from the actual colors due to printing limitations.
- Navigation functions and information displayed may vary depending on when the navigation system was updated.
- Caution: For safe driving, please read the user manual before the initial use of the vehicle.
- Please recycle this booklet to protect the environment.
- Customer service center: 080-200-2000

05/01
2024

Date of publication



This PDF file is for reference only.

Differences with actual models sold may occur due to discrepancies with the time of printing. Please refer to the latest monthly price list and consult a sales representative to make a purchase.

Carnival Hi Limousine



Fill your lifestyle with elegance and leisure





More prominent presence of the Hi Limousine

The cohesive aerodynamic design of the high roof and side step further emphasizes the strong presence of the Hi Limousine.



The value of the Hi Limousine's exclusive points

Designed to reflect the preferences and lifestyles of its passengers, the Hi Limousine's exclusive convenience features ensure a comfortable journey, even on long road trips or bustling city streets, leaving you with nothing but refreshing memories.



High Roof



Rear Auxiliary Brake Light



Side Step

Snow White Pearl (SWP) / Specifications above was photographed with the 7-seater model and may vary by trim level, seating capacity per model, engine and options selected.

Spacious 4-seater with private relaxation

Exclusive to the 4-seater, the cozy limousine seat offers easy access and control of features like the Smart Monitor, limousine seat adjustments, and foot massager through the integrated touch controller. The intimately designed private space is perfect for stress-free relaxation.



The 4-seater's unique convenience features that bring new inspiration and energy

1. Hangers & Storage Compartment

Hangers on the top of the luggage compartments make it easy to store and access clothes, while a large storage compartment underneath is perfect for golf equipment, briefcases, and more.

2. Smartphone Wireless Charging System for the Rear Seats

Wireless smartphone charging in the left and right armrests of the rear seats adds smart convenience to your busy life.

3. Foot Massager

The foot massagers located at the front of the 2nd row massage insteps, soles, and heels to help relieve fatigue.

4. Chiller and Warmer

Keeps your beverages cool or warm.

5. Storage Compartment for the Rear Seats

At the front of the 2nd row is a storage box for shoes and miscellaneous items, maximizing the use of space.

6. Exclusive Rear Seat Tables

The exclusive 2nd-row tables can be used independently on either side for added convenience for work or light meals. Located inside the seat console, they're designed to be pulled out conveniently when needed.



Specifications above was photographed with the 4-seater model and may vary by trim level, seating capacity per model, engine and options selected.

The comfort of a premium lounge

With the latest connectivity technology and a range of multimedia features, the Hi-Limousine lets you keep up with your lifestyle. Imbued with elegance and care, the interior resembles a premium lounge.



Dynamic Body Care Seats for 2nd Row
Second-row seats with back and calf massagers are designed to help passengers relax and reduce fatigue.

Specifications above was photographed with the 7-seater model and may vary by trim level, seating capacity per model, engine and options selected.

1. 7-Seater Interior



2. Starry Sky Mood Lighting

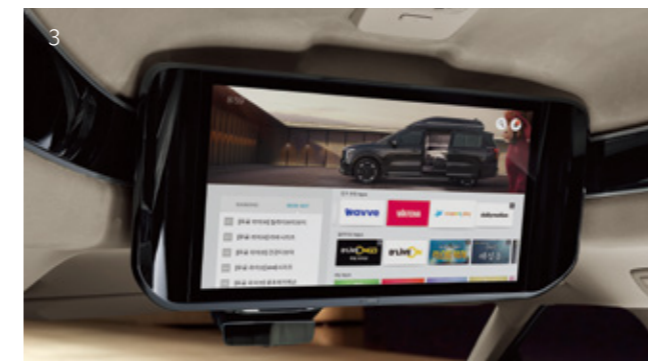
The starry sky mood lighting on the ceiling creates a luxurious and emotional atmosphere.



3. 21.5" Smart Monitor (OTT service included)

Enjoy a wide range of Over-The-Top (OTT) content via the eSIM router, which enables in-car Wi-Fi for convenient viewing.

※ The eSIM router provides in-car Wi-Fi based on LTE. Separate subscription required.



4. Pleated Curtains

Pleated curtains on the sliding door glass, quarter glass and tailgate glass provide privacy for rear passengers.



5. Built-In Air Purifier

The HEPA filter and activated carbon/zeolite composite filter provide excellent performance in removing ultra-fine dust and harmful gases from the interior.



6. LED Rear Reading Lights

The four lights on the side of the high roof can be used individually for rear seat passengers.



7. Cooling and Heating Cupholders

Located at the front (two ports) and rear (two ports) of the console, these keep drinks cold or warm for a certain period of time.

※ The location and specifications of the Cooling and Heating Cupholders in the rear seats vary depending on the number of seats of the model.



Specifications above was photographed with the 7-seater model and may vary by trim level, seating capacity per model, engine and options selected.

Further enhanced state-of-the-art safety features



1. Forward Collision-Avoidance Assist

Monitors the surroundings while driving, warns if there is a risk of a collision, and automatically assists braking if the vehicle in front suddenly slows down after the warning, or if there is an increased risk of a collision with a car, motorcycle, pedestrian or cyclist ahead. Automatically assists braking if there is an increased risk of a collision with a vehicle or motorcycle approaching from the opposite direction when turning left at an intersection with the indicator on, or with a vehicle approaching from the side of an intersection when driving straight through. Also it provides automatic braking assistance if there is an increased risk of a collision with a vehicle or motorcycle approaching from the front while driving in your own lane, and automatic evasive manoeuvres assistance if there is a risk of a collision with a vehicle or motorcycle approaching from the front or with a vehicle or motorcycle ahead in the next lane when changing lanes. Automatically assists with evasive maneuvers if there is a risk of collision with a vehicle, motorcycle, pedestrian or cyclist on the edge of the lane ahead, or a risk of rear cross-traffic collision when changing lanes.



2. Highway Driving Assist 2

Maintains a safe distance from the vehicle in front on highways and motorways, and helps the car stay in the middle of the road at the set speed, even when cornering. Moves the car to the other side of the lane if it gets too close to the vehicle next to you while driving to avoid danger. It changes lanes automatically when you turn the direction indicator switch on the steering wheel to the desired direction above a certain speed.



3. Blind-Spot Collision-Avoidance Assist

A warning is activated if there is a risk of a collision with a vehicle in the adjacent lane approaching from behind when changing lanes. It also automatically assists braking if there is an increased risk of a collision with a vehicle approaching from behind when exiting a parallel parking space.



4. Front/Side/Rear Parking Distance Warning

Alerts the driver at low speeds to avoid colliding with objects around the vehicle.



5. Navigation-based Smart Cruise Control

Helps you drive at a safe speed in line with the traffic on highways and motorways. It automatically reduces speed before entering a safe speed zone, curve or ramp, and then returns to the original set speed after passing the safe speed zone, curve or ramp.



6. Remote Smart Parking Assist

The driver can move the car forwards or backwards remotely from outside using the Smart Key.

Exterior Colors



Snow White Pearl (SWP)

Aurora Black Pearl (ABP)

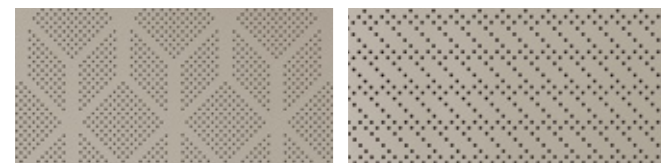
Interior Colors



Cotton Beige (Quilted Nappa Leather - 4-seater 2nd row only)



Cotton Beige (Nappa Leather)



Artificial Leather

Nappa Leather / Leather

Wheels



18" Machined Face Wheels (Hybrid)



19" Machined Face Wheels (Gasoline / Diesel / Hybrid)

Details



Kia Digital Key 2



Digital Center Mirror



Built-In Cam 2



Fingerprint Authentication System



Smartphone Wireless Charging System



Illuminated Seatbelt Buckles for 2nd Row



220V Inverter



KRELL Premium Sound

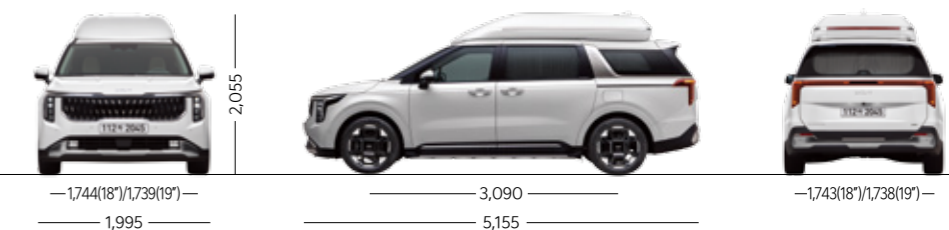
Specifications above was photographed with the 7-seater model and may vary by trim level, seating capacity per model, engine and options selected.

Dimension

Gasoline / Diesel



Hybrid



Unit : mm

Technical Data

Unit : mm

Classification	3.5 Gasoline / 2.2 Diesel		Turbo Hybrid		Classification	3.5 Gasoline		2.2 Diesel		Turbo Hybrid			
	Overall length (mm)	5,155	5,155	Displacement (cc)		3,470	2,151	1,598	Max. power (ps/rpm)	294 / 6,400	194 / 3,800	180 / 5,500	54 kW (Electric Motor)
Overall width (mm)	1,995	1,995	Max. torque (kgf-m/rpm)	36.2 / 5,000	45.0 / 1,750 ~ 2,750	27.0 / 1,500 ~ 4,500	304 Nm (Electric Motor)	Overall height (mm)	2,045	2,055	Wheelbase (mm)	3,090	3,090
Overall height (mm)	2,045	2,055	Tires (18", 19")	235/55R19	235/55R19	235/60R18, 235/55R19	Wheel tread front (mm)	1,741	1,744(18") / 1,739(19")	Brake front/rear	Ventilated disc / Disc	Ventilated disc / Disc	Ventilated disc / Disc
Wheelbase (mm)	3,090	3,090	Suspension front/rear	MacPherson Strut / Multi-link	MacPherson Strut / Multi-link	MacPherson Strut / Multi-link	Wheel tread rear (mm)	1,741	1,743(18") / 1,738(19")	Suspension front/rear	MacPherson Strut / Multi-link	MacPherson Strut / Multi-link	MacPherson Strut / Multi-link

Model	Passenger capacity	Tires	Displacement (cc)	Unladen weight (kg)	Transmission	Class	Combined CO2 emissions (g/km)	Government-reported fuel efficiency (km/ℓ)		
								City	Highway	Combined
3.5 Gasoline	4-seater	19"	3,470	2,310	8AT	5	201	7.4	10.2	8.5
	7-seater	19"	3,470	2,200	8AT	5	196	7.6	10.4	8.7
	9-seater	19"	3,470	2,175	8AT	5	196	7.6	10.4	8.7
2.2 Diesel	9-seater	19"	2,151	2,210	8AT	3	165	10.4	13.7	11.7
Turbo Hybrid	4-seater	19"	1,598	2,385	6AT	3	131	12.9	11.9	12.4
	7-seater	19"	1,598	2,260	6AT	3	125	13.8	12.1	13.0
	9-seater	18" / 19"	1,598	2,240	6AT	3	125	13.8	12.1	13.0

※ Fuel efficiency numbers correspond to standard mode. Actual figures may vary according to road conditions, driving habits, vehicle load, maintenance, and outside temperature.